

Singlepoint APQP Manager bridges the communications gap between teams and processes and eliminates the burden and risk that using multiple, fragmented spreadsheets and forms can bring. Done well, Advanced Product Quality Planning can be of huge benefit when bringing a new product to market. Done badly, it becomes a heavy burden on your time and effectiveness. So how do you unlock the power of APQP?



Whether your company is operating within the automotive supply chain and APQP/PPAP is a mandatory requirement, or your company simply wants to implement APQP and reap the benefits from the proven techniques within the methodology, Singlepoint can help you by streamlining and automating the process through 'smart authoring', process data consistency and document management.

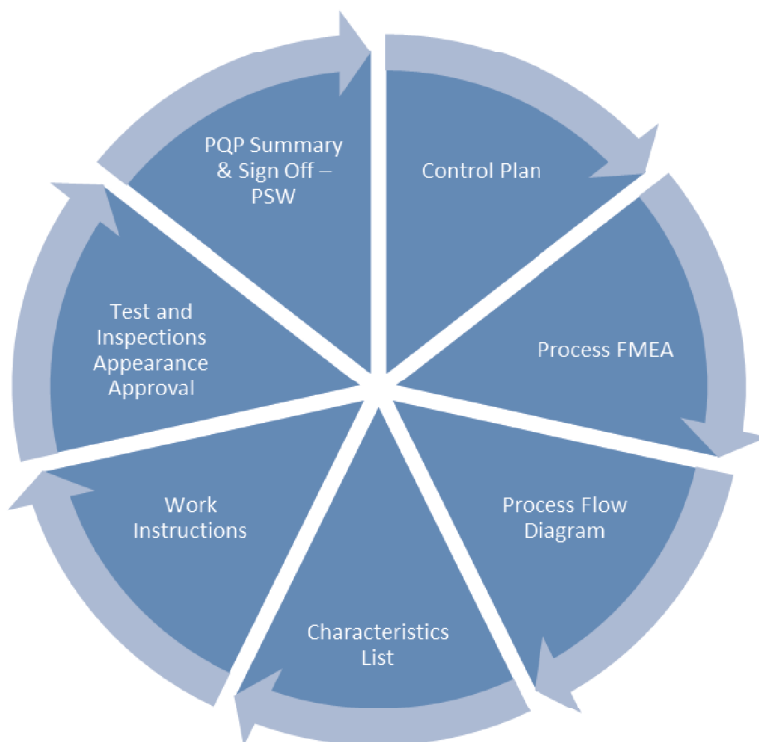
Think of Singlepoint as your 'electronic process highway', managing the process end-to-end, providing all users with a clear, step-by-step approach to process execution with all of the best practice requirements built into the very fabric of the system.

Call **01628 421829** now to arrange your free product demonstration or email enquiries@synchronology.co.uk

Singlepoint APQP Manager simplifies the creation and control of APQP documents such as the Control Plan, Process and Design FMEAs, and more.

- Allows you to create and control the complete range of APQP and PPAP documents.
- Originates 'living' documents that automatically track changes and updates.
- Full PPAP module including Part Submission Warrant and Appearance Approval Report.
- Built in functionality for Process Instructions and Inspections.
- Fully integrated with Singlepoint Document Control modules to provide complete document revision history and audit trail.
- All supporting documents can be viewed from within the Singlepoint application, including 2D and 3D CAD files.

Consistent Data Across Your APQP Documents



One of the biggest challenges surrounding APQP is maintaining consistent data across all of the various documents that you are required to produce. Most of our customers would have previously produced these documents on separate spreadsheets and the task of keeping everything correct is a monumental one. In Singlepoint APQP Manager this problem goes away. The links to the underlying SQL data ensures that a change to a dimension on your Characteristics List is automatically reflected on your Control Plan, for example.

Call **01628 421829** now to arrange your free product demonstration or email enquiries@synchronology.co.uk

APQP Process Control

Using Singlepoint APQP Manager, you can easily track the five AQP stages: Planning, Product Design and Development, Process Design and Development, Product and Process Validation, and Production. More specifically, APQP Manager provides you with a framework that supports the AIAG APQP process.

You can also track each event in the AQP process— Prototype, Pre-launch and Production—and move back and forth between them. APQP Manager lets you predefine customer lists, machines, tools, etc., rather than repeatedly entering that information. In addition, it cross-references documents by part number, operation, and characteristic as necessary, and shows you which documents have yet to be generated for that AQP project.


Accelerated Document Creation

Singlepoint APQP Manager helps your core team concentrate on the APQP process by automating document creating and control. All of APQP Manager's documents are authored through 'Smart Sheets' that 'know' and 'share' their own data and manage relationships with their companion documents so you only have to enter data once that gets proliferated throughout all documents.

Item / Function	Potential Failure Mode	Potential Effect(s) of Failure	Severity	Classification	Potential Cause(s) / Mechanisms of Failure	Occurrence	Prevention Description	Detection Description	Detect.	RPN	Recommended Action	Responsibility & Target Completion Date	Action Taken	Sev	Occ
Inside Door Panel Occupant protection from weather, noise and side impact	Corrosion	Deteriorated life of door leading to: Appearance bad due to rust thru paint over time. Impaired function of interior door hardware	5	◇	Upper edge of protective wax application for inner door is too low	6	Physical and Chemical lab tests		1	30	Add lab accelerated corrosion testing	Body Engineer 21/08/2009			

Smart Sheets are designed to 'look and feel' like spreadsheets, so they're very easy to use but they are really a window into the database in the background. We have created Smart Sheets for Design FMEA, Characteristics List, Process FMEA, Process FMEA, Control Plan, Process Flow Diagram, Process

Instructions, Tests and Inspections, Appearance Approval, PQP Summary & Sign Off and Part Submission Warrant.



Design FMEA

<input type="checkbox"/> System	Customer	Customer Part No.		Org. Date
<input type="checkbox"/> Subsystem	TIC UK	85763R		07/08/2009
<input checked="" type="checkbox"/> Component	Supplier	Code	Supplier Part No.	Dwg. Rev.
	Synchronology	10305A	6547/R	11
Part Name		Design Responsibility		Application Model / Year
RH - Inside Door Panel		Design Engineering		2010 Sebring/4dr Cabriolet
Core Team			Prepared By	Date
Belinda Morgan, James O'Neill, Julie Stevenson, Martin Sidewall, Paul Alston, Richard Brehmer, Scott Rodgers			Julie Stevenson	07/08/2009

Item / Function	Potential Failure Mode	Potential Effect(s) of Failure	Sev	Class	Potential Cause(s) / Mechanisms of Failure	Occur	Current Design Controls Prevention	Current Design Controls Detection	Detect	RPN	Recommended Action(s)	Responsibility & Target Completion Date	Action Results				
													Action Taken	Sev	Occ	Det	R.P.N.
Inside Door Panel Occupant protection from weather, noise and side impact	Corrosion	Deteriorated life of door leading to: Appearance bad due to rust thru paint over time. Impaired function of interior door hardware	5	◇	Upper edge of protective wax application for inner door is too low	6	Physical and Chemical lab tests										

Move up

Move down

Add new Operation

Add new Operation Before

Add new Operation After

Edit this Operation

Delete this Operation

Add to Smart List...

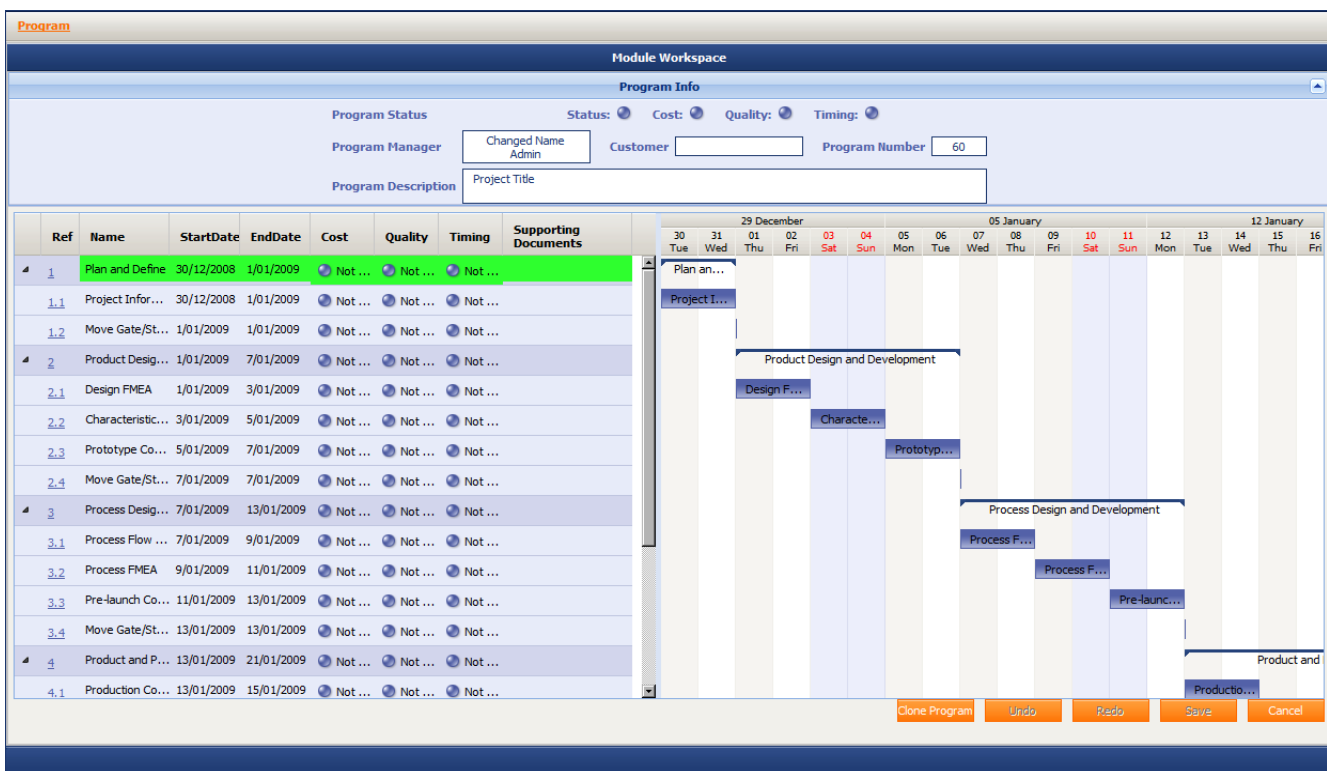
Add selected items to Smart List

Insert from Smart List...

Refresh

Call **01628 421829** now to arrange your free product demonstration or email enquiries@synchronology.co.uk

Through hundreds of customer engagements and projects, we have learned what people really need and want. They need flexibility – that's why our APQP process and templates can be modified to suit your exact requirements. They want ease of use – that's why we've developed Smart Sheets to provide an incredibly intuitive interface. And they want power – that's why our tool connects into the SQL database layer to provide real-time data sharing across your various APQP documents and provides limitless reporting in our Absolute Reporting module.



Singlepoint APQP Manager is delivered within our standard Program Manager interface for controlled task and gate/stage management. You can add tasks and even stages to suit your exact NPI (New Product Introduction) methodologies. All supporting documents can be uploaded to reside against the relevant tasks.

Over the years our customers have told us that they must have the flexibility to modify the templates. Singlepoint comes with 8 pre-configured document templates, based around the AIAG standard, but you can easily adapt these or add your own with no programming involved.

Call **01628 421829** now to arrange your free product demonstration or email enquiries@synchronology.co.uk